



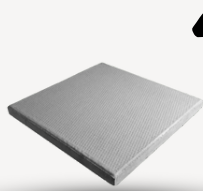
*polysand*

# OUR PRODUCTS



Mother Earth Inc. is delighted to showcase a wide range of consumer products comprised of recycled plastic waste. Each item in our collection is a testament to our dedication to sustainability, functionality, and eco-friendly solutions.

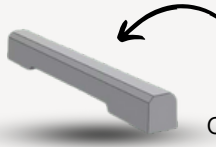
## CURRENT PRODUCTION LINE



### Landscaping slabs

These eco-friendly alternatives are ideal for various outdoor applications, including landscaping and flooring.

**DIMENSIONS:**  
24"x24" x 1.5"  
18"x12" x 1.5"  
12"x12" x 1.5"



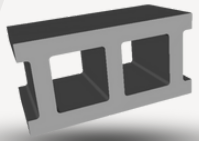
### Parking curbs

Crafted to exhibit high durability and resistance to damage, our parking curbs are straightforward to install and dependable in function.

**DIMENSIONS:**  
72"x6"x6"

### Cinder Blocks

Structural integrity is key. Our cinder blocks provide 50% more durability and strength than traditional concrete designs.



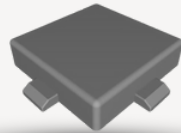
**DIMENSIONS:**  
18" x 6" x 6"



### Paver Bricks

From accent walls to backyard pathways, our paver bricks are manufactured for easy installation. Transform your space from drab to fab, all while contributing to a greener tomorrow.

**DIMENSIONS:**  
8" x 4" x 2.5"



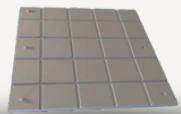
### Sidewalk slabs

These slabs stand as a testament to durability and sustainability, offering an eco-friendly solution for outdoor pathways in parks, gardens, commercial spaces, and beyond.

**DIMENSIONS:**  
48"x48"x3"

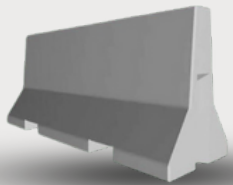
### Driveway Tiles

Our driveway tiles present an exclusive opportunity for environmentally conscious homeowners. They can be installed as interlock tiles or traditional tiles and are compatible with heated driveways.



**DIMENSIONS:**  
27" x 27" x 1"

## COMING SOON



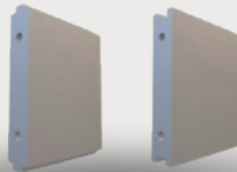
### Jersey Barrier

**DIMENSIONS:**  
60" x 30" x 18"



### Mini Barrier

**DIMENSIONS:**  
72" x 12" x 12"



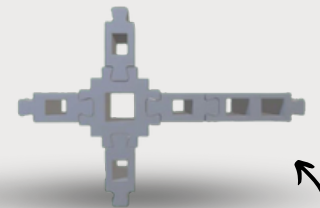
### Fence Walls

**DIMENSIONS:**  
84" x 72" x 6"



### Fence Post & Base

**DIMENSIONS:**  
84" x 6" x 6"



### Foundation

**DIMENSIONS:**  
84" x 6" x 6"



**Mother Earth Inc**

Where sustainability meets innovation



SCAN TO EXPLORE

**Mother Earth Inc.** is a proud Canadian-owned company based in Edmonton, Alberta. Our core expertise lies in the production of a diverse range of environmental friendly products crafted from recycled plastic waste.

Our sustainable construction materials stand as pragmatic solutions for waste reduction, resource conservation, and climate change mitigation.



**Mother Earth Inc.**, a proud WBE-certified company, helps you meet supplier diversity goals, support women entrepreneurs, and promote innovation—all while building a more inclusive and sustainable future.



**MADE FROM  
100% RECYCLED  
PLASTIC WASTE**



themotherearthinc



themotherearthinc1

# OUR PROCESS

Mother Earth's technology reflects years of dedicated research and innovative breakthroughs. Our comprehensive system ensures every stage, from collection to final product, is optimized for efficiency and minimal waste. Using our patented Poly sand material, we transform plastic waste into practical products

## 1. MIXING

At this stage, plastic waste is collected and sorted by type and composition. This sorting is crucial because different materials have unique melting points and properties, ensuring the final product meets our specifications.



## 2. MELTING

After sorting, the waste is shredded or chopped to increase surface area for easier melting. This material is then melted under heat and pressure in a machine like an extruder, creating Poly sand.



## 3. MOLDING

After melting, the Poly sand is prepared for molding using various techniques. We primarily use Compression Molding, an excellent method for shaping larger and more intricate items.



# MEMBERSHIPS

At Mother Earth Inc., we believe in the power of collaboration. Our memberships with leading recycling associations not only fortify our mission but also provide us with access to a diverse and reliable supply of recycled plastic materials. This network helps us connect with suppliers committed to sustainability and innovation



### ALBERTA PLASTIC RECYCLING ASSOCIATION (APRA)

Our membership in APRA strengthens our connection to the plastic recycling ecosystem in Alberta. This association enables them to provide us with shredded plastic waste that would otherwise end up in Canada's landfills.

### RECYCLING COUNCIL OF ALBERTA (RCA)

Our engagement with RCA amplifies our commitment to community awareness and participation in recycling programs. This connection allows us to procure materials while supporting community-driven recycling initiatives.



### ALBERTA RECYCLING MANAGEMENT AUTHORITY (ARMA)

ARMA's support in waste diversion programs and funding initiatives enables us to access a consistent stream of recycled plastics.

[www.themotherearth.ca](http://www.themotherearth.ca)